

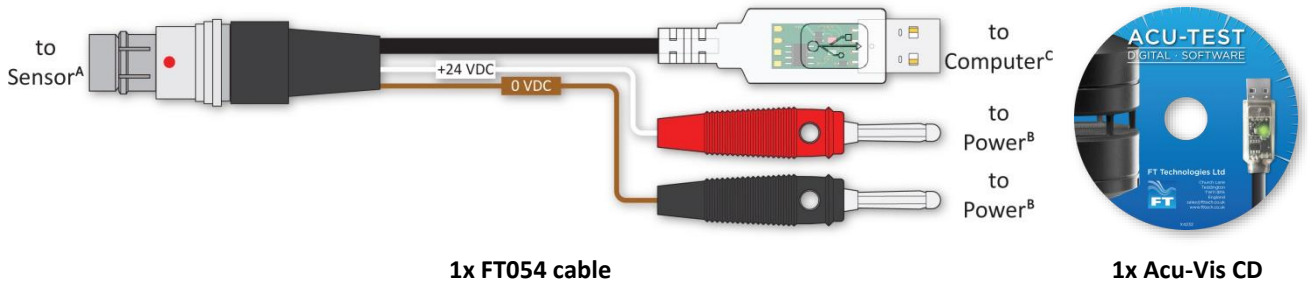


Acu-Test (Digital)

FT Technologies Test Equipment makes it easy to communicate with and test digital wind sensors. The Acu-Test LT pack is made-up of the FT054 cable and the FT Acu-Vis software. The FT054 test cable supports:

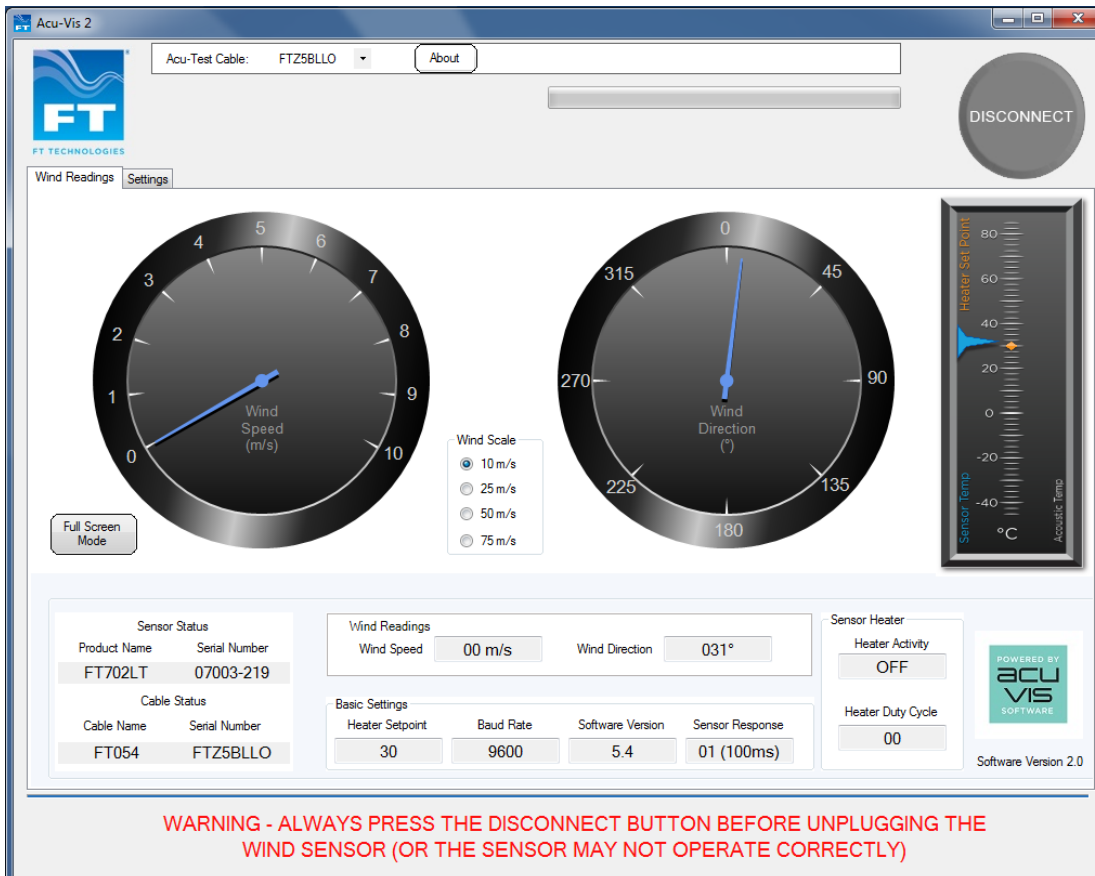
- FT702LT (V20 and V22) RS485 sensors (no 4-20mA support)
- FT722-D and FT742-D (FF, PM and DM variants only)

INCLUDED IN THE PACK



Each cable is labelled with a unique serial number and build date to ensure quality and traceability. Cable accessories include a protection cap for sensor connector and an adjustable rubber sleeve to keep the wires tidy. A CD drive is typically required for installation.

ACU-VIS SOFTWARE (Acu-Vis)

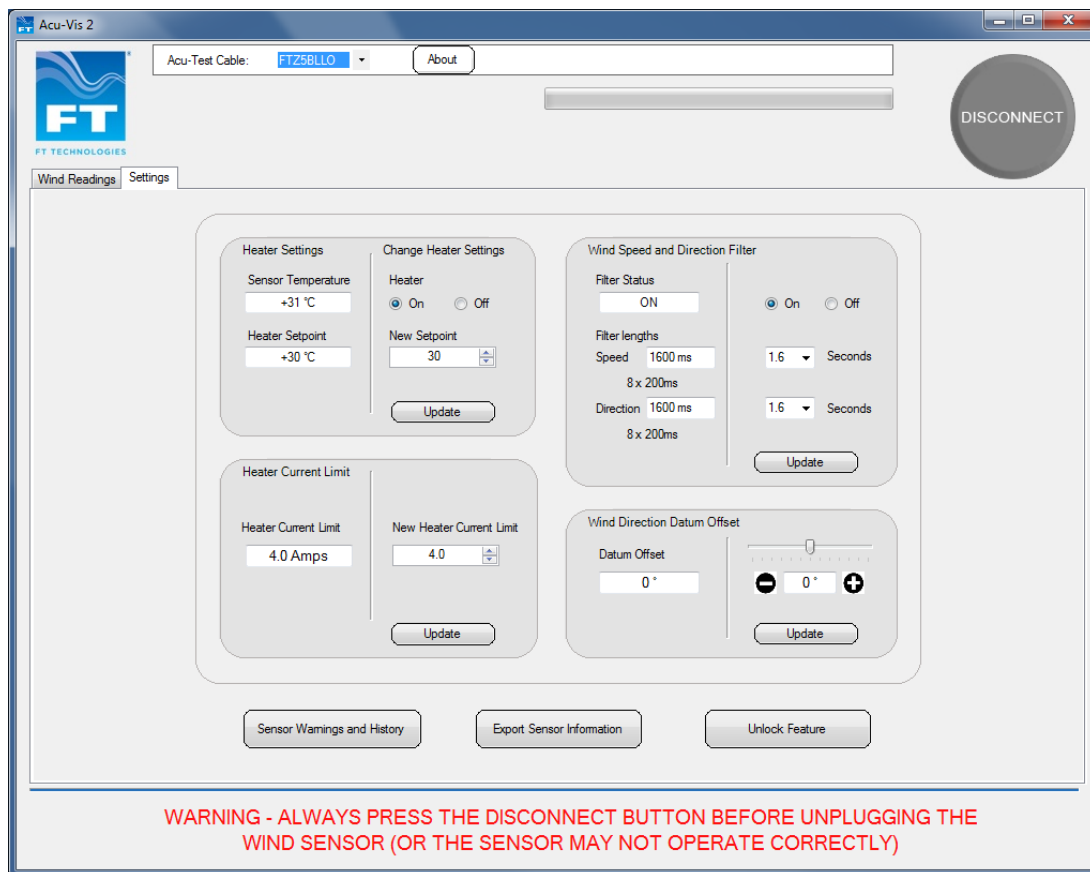


FT TECHNOLOGIES LTD

The FT and Acu-Vis logos are registered trademarks of FT technologies Ltd
A4203-4 May 2019

Above - Screen shot with sensor 07003-219 connected, on the “Wind Readings” tab

1. “Wind Reading” Tab – live readings from sensor
2. “Heater Settings” Tab
3. Wind Speed Dial
4. Wind Direction Dial
5. Wind Speed Dial Range Selection
6. Wind Speed (numeric)
7. Wind Direction (numeric)
8. Current Heater Setpoint
9. Sensor Communication Baud Rate
10. Software Version on Sensor
11. Sensor Response (Delay) – user defined
12. Product Name – of attached sensor
13. Product Version – of attached sensor
14. Serial Number – of attached sensor
15. Cable Name – type of attached cable
16. Serial Number – of attached cable



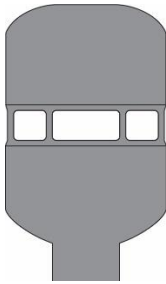
Above - Screen shot with sensor connected, on “Settings” tab

17. Sensor Temperature
18. Heater Setpoint
19. Heater Status (on/off)
20. Heater Current Limit
21. Wind Speed & Direction Filter Status (on/off)
22. Speed & Direction Filter Lengths
23. Wind Direction Datum Offset
24. Sensor Warnings & History Tab
25. Export Sensor Information (diagnostics)
26. Unlock Advanced Features Button



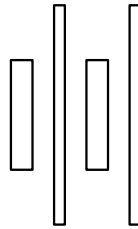
Acu-Test (Digital)

YOU WILL ALSO NEED



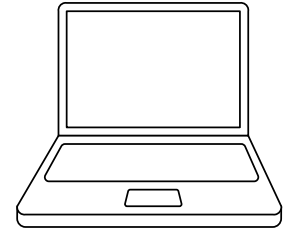
Sensor^A

+



Power Source^B

+



Computer^C

- A. This equipment can only be used to test the FT702LT, FT722-D, or FT742-D (FF, PM and DM variants) range of digital output wind sensors.
- B. Use a bench power supply unit, 12-30 VDC (current limit up to 6A), Rechargeable Battery or the FT062 (24VDC) power supply
- C. Acu-Vis software supports Window 7, 8 and 10 computers.

Warning: Live connection/disconnection of the power and/or sensors during live operation, or miswiring of the power leads could damage the equipment and is not covered by FT's standard warranty terms

**The Acu-Test LT pack is available from info@fttechnologies.com
+24 VDC Power supply available on request (part FT062).**