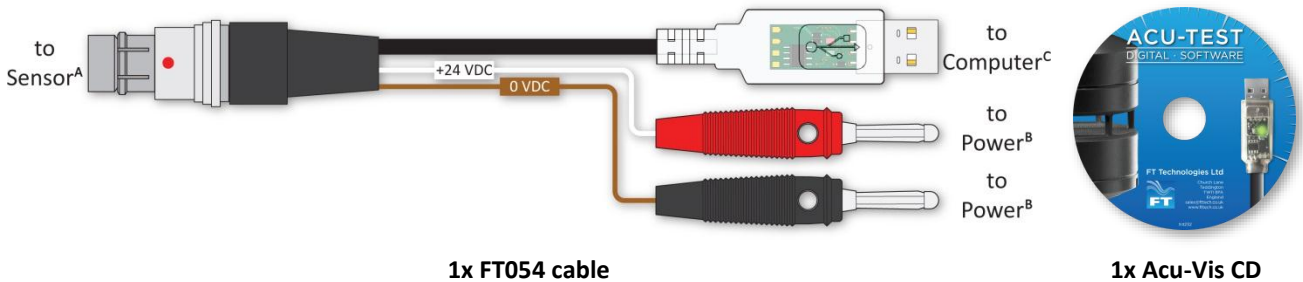


FT Technologies Test Equipment makes it easy to test and evaluate the FT range of digital output wind sensors. The Acu-Test LT pack is made-up of the FT054 cable and our Acu-Vis software.

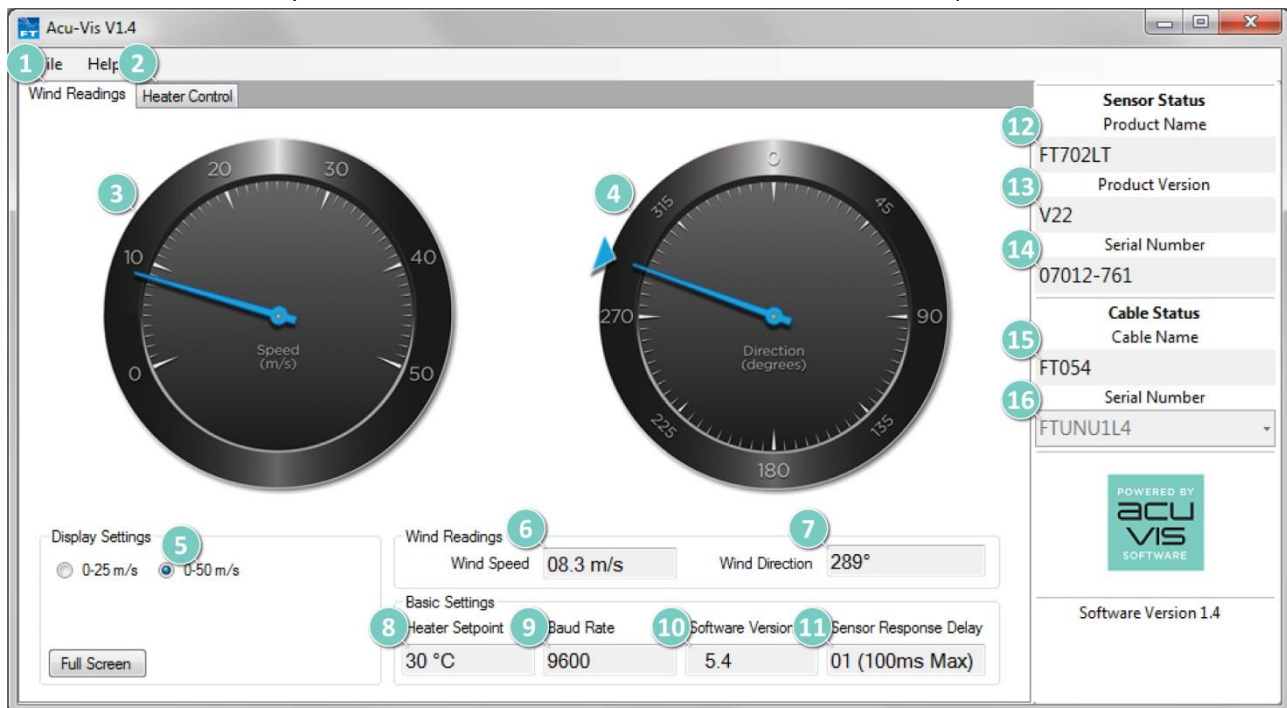
## INCLUDED IN THE PACK



Each cable is labelled with a unique serial number and build date to ensure quality and traceability. Cable accessories include a protection cap for sensor connector and an adjustable rubber sleeve to keep the wires tidy.

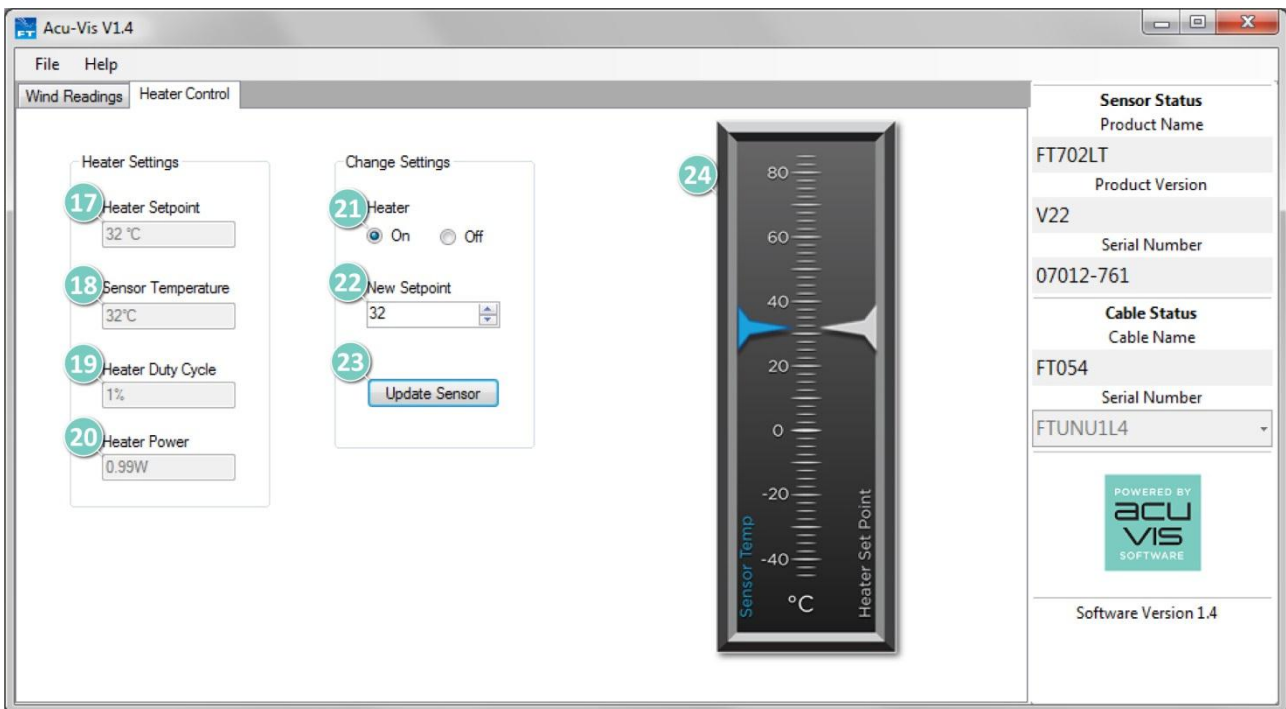
## ACU-VIS SOFTWARE

The Acu-Vis software can be installed from the CD provided and is available in English. The software automatically finds and identifies if a FT054 cable is connected to the computer.



**Above** - Screen shot with sensor 07012-761 connected, on “Wind Reading” tab

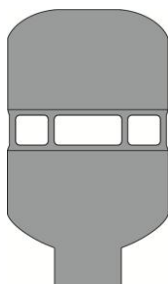
- |   |  |
|---|--|
| <ol style="list-style-type: none"> <li>1. “Wind Reading” Tab – live readings from sensor</li> <li>2. “Heater Settings” Tab</li> <li>3. Wind Speed Dial</li> <li>4. Wind Direction Dial</li> <li>5. Wind Speed Dial Range Selection</li> <li>6. Wind Speed (numeric)</li> <li>7. Wind Direction (numeric)</li> <li>8. Current Heater Setpoint</li> </ol> | <ol style="list-style-type: none"> <li>9. Sensor Communication Baud Rate</li> <li>10. Software Version on Sensor</li> <li>11. Sensor Response Delay – user defined</li> <li>12. Product Name – of attached sensor</li> <li>13. Product Version – of attached sensor</li> <li>14. Serial Number – of attached sensor</li> <li>15. Cable Name – type of attached cable</li> <li>16. Serial Number – of attached cable</li> </ol> |
|---|--|



**Above** - Screen shot with sensor 07010-851 connected, on “Heater Control” tab

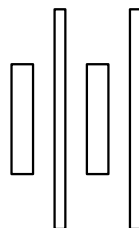
- |   |   |
|---|---|
| <b>17.</b> Heater Setpoint – Currently on sensor              | <b>21.</b> Select to enable/disable sensor heaters            |
| <b>18.</b> Sensor Temperature – Sensors internal temperature  | <b>22.</b> New Desired Heater Setpoint                        |
| <b>19.</b> Heater Duty Cycle – Current % of max. heater power | <b>23.</b> Update Sensor – Load new heater settings to sensor |
| <b>20.</b> Heater Power – Estimate of heater power            | <b>24.</b> Temperature gauge                                  |

## YOU WILL ALSO NEED



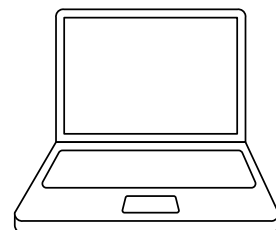
**Sensor<sup>A</sup>**

+



**Power Source<sup>B</sup>**

+



**Computer<sup>C</sup>**

- A. This equipment can only be used to test the LT range of digital output wind sensors.
- B. Use a bench power supply unit, 20-30 VDC (6A), Rechargeable Battery or +24 VDC Laptop charger.
- C. Acu-Vis software will run on Window XP, Vista, Windows 7 or Windows 8 computers.

## KEEPING IT SIMPLE

This software is to be used as a simple way to test the wind speed and direction functionality of an FT Technologies digital output wind sensor. If you have any further software requirements, please contact us and we will be happy to discuss your needs in more detail.

The Acu-Test LT pack is available from [sales@fttech.co.uk](mailto:sales@fttech.co.uk)  
+24 VDC Laptop charger (available on request).